

GMC SUBURBAN

2-WD and 4-WD Gas and High Mileage Diesel Models



TOUGH QUALITY TRUCKS WITH VALUE



MARK OF EXCELLENCE

GMC SUBURBAN . . . BIG, STRO

For all-around usefulness, the GMC Suburban is hard to beat. It's a superb family or ride pool wagon — with available second and third seats installed, Suburban can carry nine adults with plenty of stretch-out room for all of them. Suburban is noted for trailering — properly equipped, a C-2500 model can move up to 15,500 pounds including itself, passengers, cargo and trailer. And Suburban is a great load carrier — with the available 2/3-1/3-split second seat folded into a flat load floor, there's 144 cu. ft. of cargo space.

Last year an available 6.2 Liter V8 diesel engine was introduced as an alternate choice to Suburban's traditional, dependable V8 gasoline engines. High-mileage diesel is available for all 2- and 4-wheel-drive half-ton and three-quarter-ton models. See Page 4 and back cover for details.

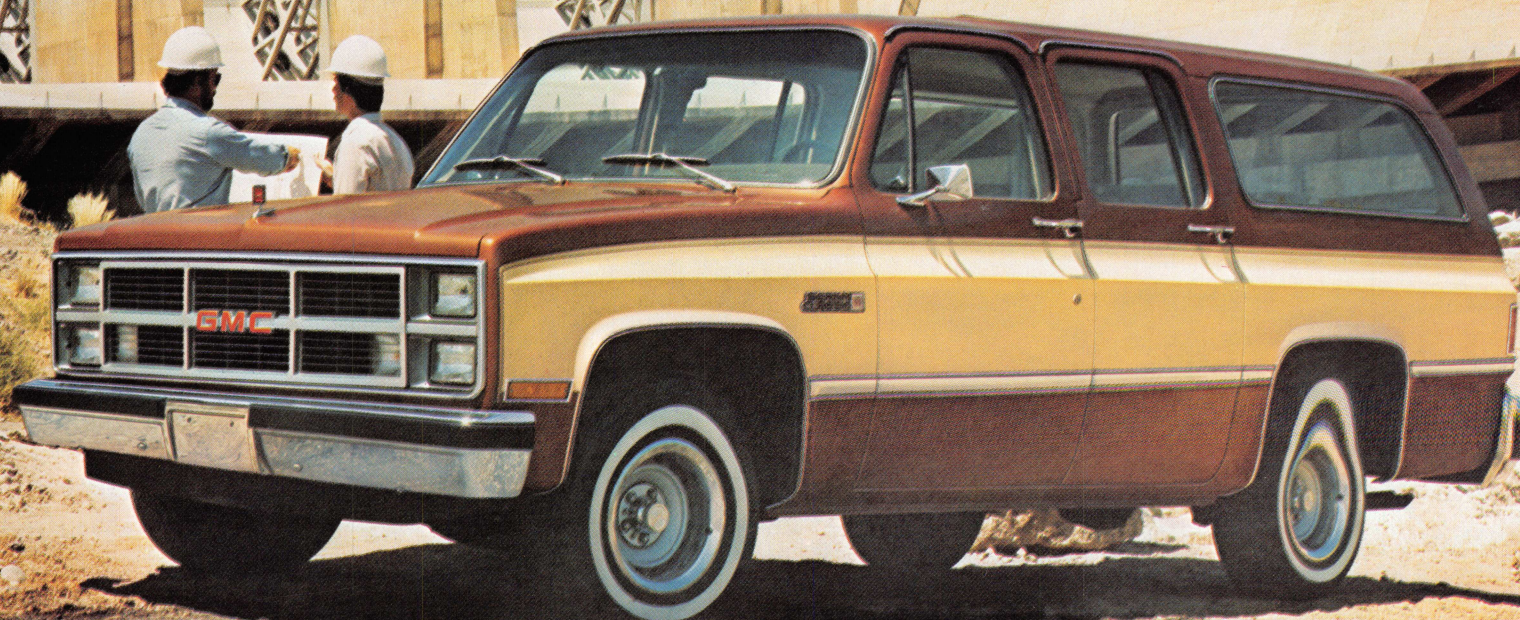
New Features for '83 Suburbans

- New designs for standard and deluxe front ends with new grilles, new lamp bezels and new outline moldings
- Parking lamps placed below standard single headlamps and behind lower grille corners in deluxe grille
- Seven choices of color/fabric combinations for available bucket seats
- Sierra Classic and High Sierra use new pewter-toned brushed aluminum finish for instrument cluster bezels; also for Sierra Classic applique on instrument panel, horn button and door trim panels
- New electronic-type automatic speed control is available
- Air cleaner precleaner and engine block heater now available for all gasoline engines
- Improved corrosion protection measures.

IMPORTANT! A WORD ABOUT THIS CATALOG

We have tried to make this catalog as comprehensive and factual as possible and we hope you find it helpful. However, since the time of printing, some of the information you'll find here may have been updated. Also, some of the equipment shown or described throughout this catalog are available as factory-installed options, as dealer accessories, and as specialized equipment from various independent suppliers at extra cost. Your dealer has details and, before ordering, you should ask him to bring you up to date.

The right is reserved to make changes at any time, without notice, in prices, colors, materials, equipment, specifications and models. Check with your GMC dealer for complete information.



IG, COMFORTABLE AND VERSATILE

Standard Sierra Interior. Grained vinyl fabric in a choice of Blue or Almond covers the full-depth foam cushion of the front bench seat. Second and third bench seats are available in matching covers. Trim includes color-keyed sunshades, cockpit-type instrument cluster, door trim panels with integral armrests, tinted window glass and full-length Black rubber floor mat.

High Sierra Available Interior. Trim is coordinated in a choice of Blue or Almond colors. Bench seat can be upholstered in standard vinyl or available custom leather-grained vinyl or available custom cut-pile velour cloth. Second folding bench seat and removable rear bench seat are available. High Sierra also includes full-length

insulated headliner, two dome lamps with door-operated switches, cigarette lighter and illuminated ashtray, full-length color-keyed rubber floor mats and carpet-type spare tire cover.

Sierra Classic Available Interior. Our most luxurious trim now gives you seven fabric/color choices for the standard bench or available bucket seats: Almond, Blue, Carmine and Gray custom cloth; and Almond, Blue, Carmine custom vinyl. Other trim is coordinated to the selected seat color. This trim includes the High Sierra items plus deluxe instrument panel with needle-gage instruments; insulated floor carpeting; visor mirror; custom steering wheel; carpet trim on body side and door trim panels.



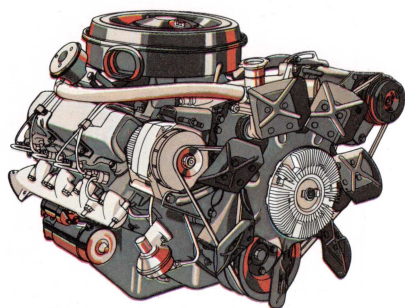
Panel door models have fixed tinted glass in rear doors and outside key lock.



Tinted glass for tailgate models is manually operated. Power drop glass is available.



GASOLINE AND HIGH MILEAGE DIESEL POWER



6.2 Liter V8 Diesel. For those who prefer diesel fuel economy, this tough truck 6.2 Liter diesel engine is offered as an alternative to gasoline power in GMC Light Duty trucks. Two versions are available — one for Suburbans under 8,500 lbs. GVWR and one for 8,500 lbs. and over GVWR. Both versions use proven Ricardo Comet V pre-combustion chambers for impressive fuel combustion efficiency and emissions control.

Included with the engine are a low-coolant sensor, polywrapped paper element air

cleaner, fuel line heater, engine block heater and a fuel tank water detection and drain system. A B3J Diesel Equipment package is required when this engine is ordered. See the technical data chart on the back cover.

HIGH-MILEAGE DIESEL SUBURBAN

Available 6.2 Liter V8 diesel engine with standard 4-speed automatic overdrive transmission on C-1500 (2-WD) Suburban.

Remember, use estimated MPG for comparison. Your mileage may differ depending on speed, distance, weather. Actual highway mileage may be lower.

1983 EPA ESTIMATES	
EPA Est MPG	20
Est Hwy	30

A WORD ABOUT ENGINES

GMC Light Duty Trucks are equipped with engines produced by other GM divisions, subsidiaries, or affiliated companies worldwide. See your dealer for details.

DISPLACEMENT, LITER	LIGHT-DUTY CERTIFICATION (GVWR'S UNDER 8500 LBS)			HEAVY-DUTY CERTIFICATION (GVWR'S 8500 LBS AND OVER)		
	5.0 V8 with ESC*	5.7 V8*	6.2 V8 Diesel†	5.7 V8*	7.4 V8*	6.2 V8 Diesel†
ENGINE ORDERING CODE	LE9*	LS9	LH6	LT9	LE8	LL4
BORE & STROKE, INCHES	3.74 x 3.48	4.0 x 3.48	3.98 x 3.82	4.0 x 3.48	4.25 x 4.0	3.98 x 3.82
COMPRESSION RATIO	9.2:1	8.2:1	21.3:1	8.3:1	7.9:1	21.3:1
SAE NET HORSEPOWER @ RPM	165 @ 4400	165 @ 3800	130 @ 3600	160 @ 3800†	230 @ 3800	135 @ 3600
SAE NET TORQUE LBS/FT @ RPM	240 @ 2000	275 @ 1600	240 @ 2000	250 @ 2800†	360 @ 2800	240 @ 2000

† Net HP 155 @ 4000, net torque 240 @ 2800 in California. ‡ Produced by GM, Detroit Diesel Allison Division
* Engine not available in California.
° Produced by GM, Chevrolet Motor Division

V8 GASOLINE ENGINES

5.0 Liter 4-Bbl. V8 With ESC. A highly efficient engine with a 9.2 to 1 compression ratio. The engine features an Electronic Spark Control that automatically retards the spark when a sensor unit detects a "knock" condition. The engine runs on low-octane unleaded fuel. It's standard for C-1500 Suburbans (not available in California).

5.7 Liter 4-Bbl. V8 is offered in two versions. With light-duty certification, it is the standard engine for 4-WD K-1500 and available for 2-WD C-1500. The heavy-duty-certified 5.7 V8 is standard for C/K-2500 Suburbans.

7.4 Liter 4 Bbl. V8 is available for C-2500. Recommended when the Suburban's maximum towing capability is desired.



Our top Sierra Classic interior shown with available equipment



Available power door locks/windows

Our High Sierra Classic interior shown with available equipment

A WORD ABOUT ASSEMBLY, COMPONENTS AND OPTIONAL EQUIPMENT IN THESE GMC PRODUCTS

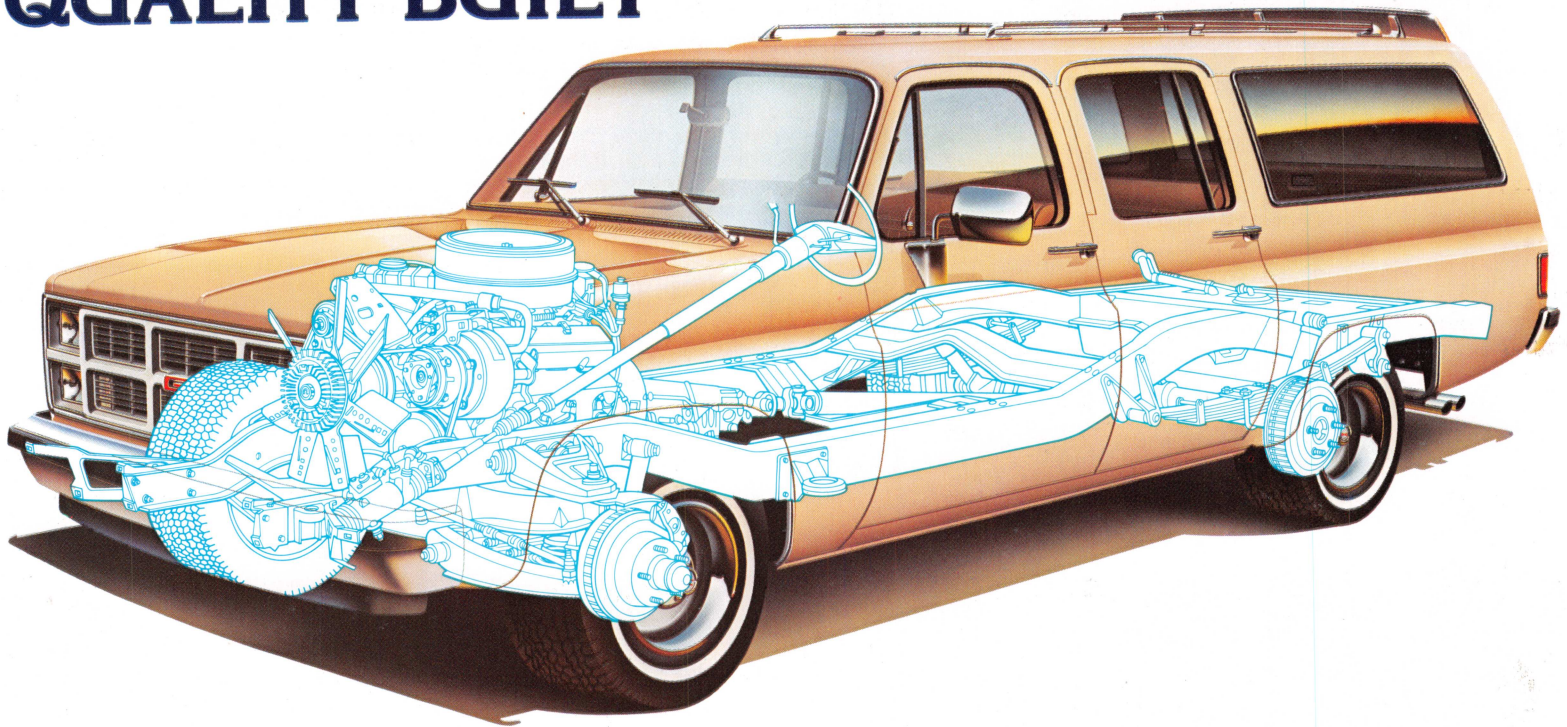
The Suburbans described in this brochure are assembled at facilities of General Motors Corporation operated by the Truck and Bus Manufacturing Division. These vehicles incorporate thousands of different components produced by various divisions of General Motors and by various suppliers to General Motors. From time to time during the manufacturing process, it may be necessary, in order to meet public demand for particular vehicles or equipment, or to meet federally mandated emissions, safety and fuel economy requirements, or for other reasons, to produce GMC products with different components or differently sourced components than initially scheduled. All such components have been approved for use in GMC products and will provide the quality performance associated with the GMC name.

With respect to extra-cost optional equipment, make certain you specify the type of equipment you desire on your vehicle when ordering it from your dealer. Some options may be unavailable when your truck is built. Your dealer receives advice regarding the current availability of options. You may ask the dealer for this information. GM also requests the dealer to advise you if an option you ordered is unavailable. We suggest that you verify that your truck includes the optional equipment you ordered, or if there are changes that they are acceptable to you.

The GMC Suburbans described in this brochure are also available under the Chevrolet nameplate C10, C20, K10, K20 Suburban.

GMC

QUALITY BUILT



Double-Wall Construction of hood, front fenders, side doors, rear doors or tailgate (depending upon model) and portions of the body.

Girder Beam Front Suspension on 2-WD permits front wheels to take bumps independently to help smooth the ride.

4-Speed Automatic Overdrive Transmission is standard on C-1500 and available with all gasoline engines except the 7.4 Liter V8. It's also available with diesel models. (Standard engine not available in California).

Salisbury-Type Rear Axle features a large ring gear, roller bearings, and a wide range of ratios. Locking differential is available with certain ratios.

Two-Stage Multileaf Rear Springs provide a soft ride under light load and progressively firmer support as load increases. Springs are Ionoclad-painted to help resist corrosion.

Automatic-Locking Front Hubs on 4-WD. A shift lever inside the cab permits you to shift from 2-WD to 4-WD while traveling at speeds less than 25 MPH. Shift lever quadrant is illuminated for night driving.

Flow-through power ventilation is activated by the standard heater blower switch. Outside air is blower-circulated through the interior, exiting through door vents when the windows are closed — a standard feature on Suburban.

Available Appearance and Convenience Equipment

Air conditioning front or front/rear Power window/door locks Intermittent wipers Rear heater Electric rear window defogger (requires electric tailgate

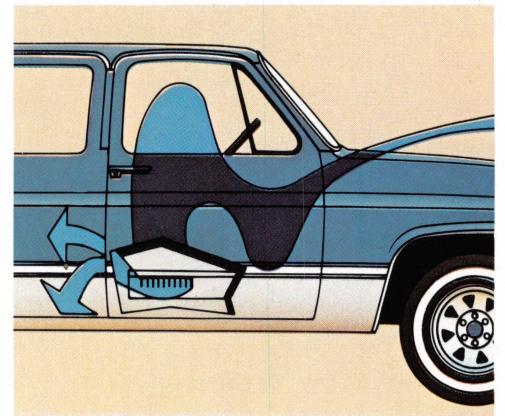
window) Quartz electric clock (includes gage package) Cigarette lighter w/lighted ashtray Delco radios Deep-Tinted glass Bucket seats w/center console (Sierra Classic only) Folding center seat Rear seat Color-keyed front floor mats Comfortilt steering wheel Deluxe front appearance Molding packages Door edge guards Halogen headlamps Below eyeliner mirrors Camper mirrors Roof marker lamps Deluxe bumpers Front bumper guards Rally or styled wheels Bright wheel covers Headlamp warning buzzer

Available Operating and Chassis Equipment

New electronic speed control Gages Power steering (2-WD) Auxiliary battery HD battery 66-amp. generator Cold-climate package Gas engine oil cooler HD automatic transmission oil cooler HD radiator Air cleaner precleaner 4-WD Front Quad Shocks Front stabilizer bars (2-WD) HD shocks Locking differential rear axle Extra-capacity fuel tank Fuel tank stone shield 4-WD Front tow hooks Deadweight trailer hitch Hitch platform HD Trailering Special Equipment — Ask your GMC Dealer about desired options not listed here.

New Exhaust Fasteners. Spring retention of exhaust pipe flanges to engine exhaust manifolds permits flexibility, minimizes stress, and thus helps add to exhaust system durability. Mufflers have a double-wrapped shell and interior baffles of heavy-gauge aluminumized metal.

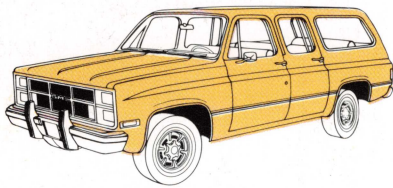
Electrical Equipment with gasoline engines includes Delco Freedom battery



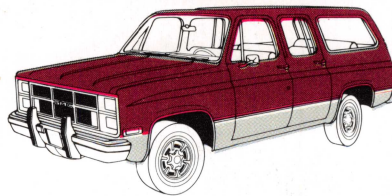
that never needs water added, 37-amp. generator and High Energy Ignition system. Diesel Suburbans have two heavy-duty Freedom batteries and 66-amp. generator.

NEW STEPS TO FIGHT CORROSION

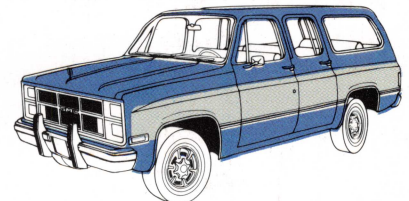
In '83 two new anti-corrosion measures are added to our already extensive procedures: Zincrometal is now used for the hood inner panel and galvanized steel is used for the rear cargo platform. Traditional GMC anti-corrosion treatments include the use of corrosion-resistant steels (Zincrometal, one- or two-side-galvanized steel, zinc-plated steel, and zinc-iron alloy coated steel) to fashion many parts of the body and sheet metal. Special Elpo-dip priming coats the entire body. Aluminum wax preservative and special sealers are used in strategic areas to ward off contaminants. Finally, a lustrous coat of tough acrylic enamel adds a beautiful protective finish.



Standard Solid Paint Scheme



Available Special Two-Tone



Available Exterior Decor Package

PAINT SCHEMES

Standard Solid colors: Almond, Midnight Black, Light Blue Met., Midnight Blue, Light Bronze Met., Mahogany Met., Carmine Red, Silver Met., Frost White, Colonial Yellow. **Available Special Two-Tone:** Includes molding package and bright trim; second color applied below body side and rear moldings. **Available Exterior Decor Package** includes Sierra Classic moldings, dual-tone upper body side and rear decal stripes coordinated to paint color, and stand-up hood ornament for gas engine models; secondary color applied between striping and moldings.

TRAILERING WITH SUBURBAN

Suburbans are noted for their trailering ability, and for 1983 we've expanded axle ratio selection in the available HD Trailering Special Package to provide additional GCWRs. A properly equipped C-2500 Suburban can move up to 15,500

pounds Gross Combination Weight (includes Suburban, passengers, their gear and trailer). A weight-distributing hitch platform for trailers up to 9,500 pounds is available from GMC. Larger capacity platform hitches are available from outside suppliers. Ask your GMC Dealer for details.

TRAILERING SELECTOR GUIDE BY GCWR

MODEL SERIES	C-1500 K-1500	C-1500 K-1500	C-2500 K-2500	C-2500 K-2500	C-2500
ENGINE	LS9 5.7 Liter V8 Gasoline	LH6 6.2 Liter V8 Diesel	LT9 5.7 Liter V8 Gasoline	LL4 6.2 Liter V8 Diesel	LE8 7.4 Liter V8 Gasoline
TRANSMISSION	Automatic	Automatic	Automatic	Automatic	Automatic
REAR AXLE RATIO	3.42/3.73*	3.42/3.73*	4.10/4.56†	4.10/4.56†	3.21/4.10
GCWR	10,500/11,500	10,000/11,000	12,500/14,000	12,000/13,500	14,000/15,500

†C-2500 Only
*Except C-1500 in California

TECHNICAL DATA

SERIES	TWO-WHEEL DRIVE		FOUR-WHEEL DRIVE	
	C-1500	C-2500	K-1500	K-2500
GASOLINE ENGINE MODELS				
GVW RATING, LBS	6100, 6800	8600	6100, 7000	8600
PAYLOAD RANGE, LBS	1771-2362	3870-3908	1355-2057	3568-3606
ENGINES, LITER	Std 5.0 V8/ESC*	5.7 V8	5.7 V8	5.7 V8
	Avail 5.7 V8	7.4 V8	—	—
FRONT SUSPENSION	Independent, Coil Springs		Hypoid Drive, Leaf Springs	
Capacity, Lbs	3250	3800	3600	3800
FRONT SPRINGS	Std 1625	1900	1850	1850
CAPACITY, EA, LBS	Avail —	—	2250	2250
FRONT STABILIZER BAR	Avail	Std	Std	Std
REAR SUSPENSION	Semifloating**		Semifloating**	
Axle Type	—		—	
Axle Cap, Lbs	4000	6000	4000	6000
REAR SPRINGS	Std 2000	3000	2000	3000
CAPACITY EA, LBS	Avail —	—	—	—
	Std 25mm	32mm	25mm	32mm
SHOCK ABSORBERS	Avail 32mm	—	32mm@ Frt Quad Shocks@@	Frt Quad Shocks@@
BRAKES, DISC/DRUM	Vacuum Power Manual		Vacuum Power Power	
STEERING	Power ^{oo}		—	—
TRANSMISSION	Std 4 Spd Auto OD	4-Spd Manual	4-Spd Manual*	4-Spd Manual
	Avail —	3-Spd Auto ^{oo} 4-Spd Auto OD#	4-Spd Auto OD	3-Spd Auto 4-Spd Auto OD
TIRES, RADIAL	Std P235/75R-15	LT235/85R-16D/E	P215/75R-15	LT235/85R-16D/E
	Larger Size Tubeless		Larger Size Tubeless	
FUEL TANK, GALS	Std 25	31, 40	31, 40	31, 40
BATTERY, CCA	Std 405	515 ^{oo}	405	515
	Avail 37+	—	37+	—
GENERATOR, AMPS	Avail 66+	—	66+	—

* Not available in California
** Full-floating with 7.4L engine
@ Requires 2250-lb front springs
@@ Consists of four 25mm front shocks and two 32mm rear shocks

^{oo} Required with 7.4L engine
[%] Includes engine oil cooler, heavy-duty radiator and dual exhaust system as part of B3J Diesel Equipment
[#] Available for 5.7L engine only

SERIES	TWO-WHEEL DRIVE		FOUR-WHEEL DRIVE	
	C-1500	C-2500	K-1500	K-2500
SUBURBAN WITH AVAILABLE DIESEL (Requires available 6.2L diesel engine and B3J Diesel Equipment.)				
GVW RATING, LBS	7000	8600	7000 [§] , 7300 [§]	8600
PAYLOAD RANGE, LBS	2237-2275	3529-3567	1912-2240	3214-3252
ENGINE, LITER	6.2 V8%		6.2 V8%	
FRONT SUSPENSION	Independent, Coil Springs		Hypoid Drive, Leaf Springs	
Capacity, Lbs	3400	3800	3600	3800
FRONT SPRINGS	Std 1700	1900	1850	1850
CAPACITY EA, LBS	Avail —	—	2250	2250
FRONT STABILIZER BAR	Standard		Standard	
REAR SUSPENSION	Semifloating		Semifloating	
Axle Type	—		—	
Axle Cap, Lbs	4000	6000	4000	6000
REAR SPRINGS	Std 2000	3000	2000	3000
CAPACITY EA, LBS	Avail —	—	—	—
	Std 25mm	32mm	25mm	32mm
SHOCK ABSORBERS	Avail 32mm	—	32mm Frt Quad Shocks@@	Frt Quad Shocks@@
BRAKES, DISC/DRUM	Hydraulic Power		Hydraulic Power	
STEERING	Power		Power	
TRANSMISSION	Std 4-Spd Auto OD	—	—	—
	Avail —	3-Spd Auto [‡] 4-Spd Auto OD	4-Spd Auto OD [‡]	3-Spd Auto [‡] 4-Spd Auto OD
TIRES, RADIAL	Std P235/75R-15XL	LT235/85R-16D/E	P235/75R-15 [§] P235/75R-15XL [§]	LT235/85R-16D/E
	Larger Size Tubeless (except C-1500)		Larger Size Tubeless (except 7300 lb GVW, K-1500)	
FUEL TANK, GALS	Std 27	32, 41	27	32, 41
BATTERY CCA	Twin 550		Twin 550	
GENERATOR, AMPS	66+		66+	

+ 78-amp generator substituted when available rear heater and rear window defogger are used in combination
[§] Without available second rear seat
[‡] With available second rear seat
[‡] Minimum requirement for B3J Diesel Equipment



Official Truck
of the XXIIIrd
Olympiad
Los Angeles
1984

The right is reserved to make changes at any time, without notice, in prices, colors, materials, equipment, specifications and models. Check with your GMC dealer for complete information.



GMC TRUCKS

GENERAL MOTORS CORPORATION
PONTIAC, MICHIGAN 48053